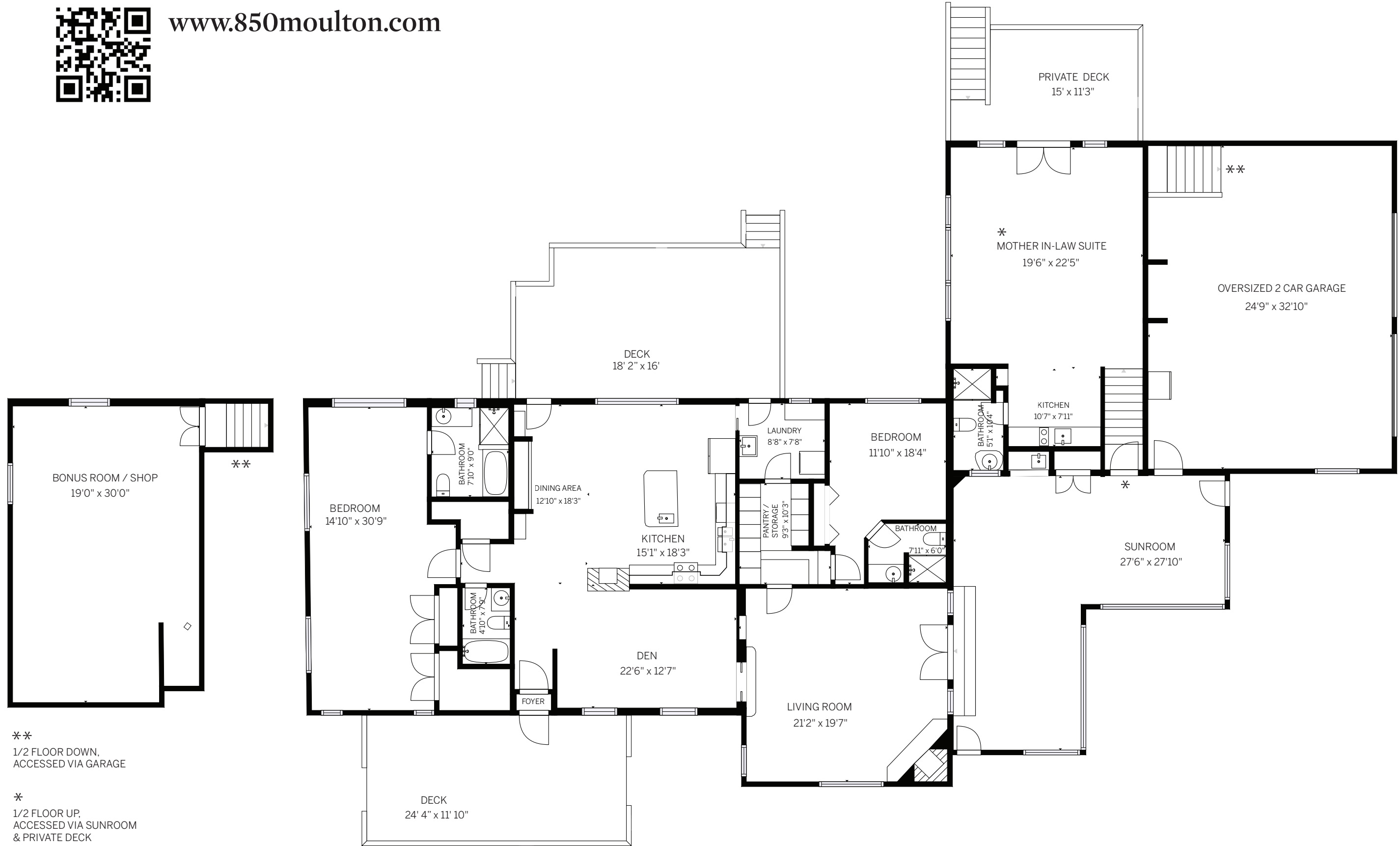




www.850moulton.com



**
1/2 FLOOR DOWN,
ACCESSED VIA GARAGE

*
1/2 FLOOR UP,
ACCESSED VIA SUNROOM
& PRIVATE DECK

MAIN FLOOR

All information deemed reliable, but not guaranteed. Any measurements are approximate & need verification. For illustration purposes only. Imagery does not imply conveyance.

850 Moulton Loop, Jackson, WY 83001
2.44 Acres, 3 Bedroom, 4 Bath, 2 Car Garage
3,570 SF + 710 bonus SF

Offered for Sale by Sotheby's Intl Realty®
Meredith Landino, Sales Associate
307-690-8028 | meredith.landino@jhsir.com



Jackson
Hole

Sotheby's
INTERNATIONAL REALTY